



This is a digital copy of a book that was preserved for generations on library shelves before it was carefully scanned by Google as part of a project to make the world's books discoverable online.

It has survived long enough for the copyright to expire and the book to enter the public domain. A public domain book is one that was never subject to copyright or whose legal copyright term has expired. Whether a book is in the public domain may vary country to country. Public domain books are our gateways to the past, representing a wealth of history, culture and knowledge that's often difficult to discover.

Marks, notations and other marginalia present in the original volume will appear in this file - a reminder of this book's long journey from the publisher to a library and finally to you.

### **Usage guidelines**

Google is proud to partner with libraries to digitize public domain materials and make them widely accessible. Public domain books belong to the public and we are merely their custodians. Nevertheless, this work is expensive, so in order to keep providing this resource, we have taken steps to prevent abuse by commercial parties, including placing technical restrictions on automated querying.

We also ask that you:

- + *Make non-commercial use of the files* We designed Google Book Search for use by individuals, and we request that you use these files for personal, non-commercial purposes.
- + *Refrain from automated querying* Do not send automated queries of any sort to Google's system: If you are conducting research on machine translation, optical character recognition or other areas where access to a large amount of text is helpful, please contact us. We encourage the use of public domain materials for these purposes and may be able to help.
- + *Maintain attribution* The Google "watermark" you see on each file is essential for informing people about this project and helping them find additional materials through Google Book Search. Please do not remove it.
- + *Keep it legal* Whatever your use, remember that you are responsible for ensuring that what you are doing is legal. Do not assume that just because we believe a book is in the public domain for users in the United States, that the work is also in the public domain for users in other countries. Whether a book is still in copyright varies from country to country, and we can't offer guidance on whether any specific use of any specific book is allowed. Please do not assume that a book's appearance in Google Book Search means it can be used in any manner anywhere in the world. Copyright infringement liability can be quite severe.

### **About Google Book Search**

Google's mission is to organize the world's information and to make it universally accessible and useful. Google Book Search helps readers discover the world's books while helping authors and publishers reach new audiences. You can search through the full text of this book on the web at <http://books.google.com/>

CJ  
4914  
.C85

B 816,729



27  
1917  
105

THE

# CANADIAN

## BOUQUET-SOUS

BY

EUGENE G. COURTEAU, M.D.



ST-JACQUES, QUE.

CANADA

1908







CJ  
4914  
C75

BOUQUET-SOUS. OBVERSE.



BOUQUET-SOUS. REVERSES.



1



2



3



4



5



6



7



8.9.10.11.13.



12



14



15



18.19.



20.21.22.23.



24



25.26.



27



29.30.31.32.35.



33.36.



37.38.39.46.



40



BOUQUET-SOUS. OBVERSES.



31



32



33



37.41



38



39.42.54



40



43



45.46.51.53



47.48.60.71



49



56.58



57.59



61.62



63.



72

BOUQUET-SOUS. REVERSES.



41.42



43



45



47



48



49



51



53.54.56.62



57.58.61



59.60



63



71



72



THE  
CANADIAN  
BOUQUET-SOUS

BY  
EUGENE G. COURTEAU, M.D.



ST-JACQUES, QUE.

CANADA

---

1908



*Arch. no. 100-100  
100-100-100  
5-26-47  
5-5 9.5*

## INTRODUCTION

There is no country without its history, nay rather a history replete with events worthy of remembrance.

In taking up the description of the tokens that form the subject of this monograph I bring to the mind of our readers an event cherished by all Canadians as well as one interesting to those who desire to trace up the evolution of a nation.

The first two pieces described were evidently struck for one of the banks in Montreal—most likely the City Bank—the dies of which, as well as those of the “Rebellion token” were undoubtedly sunk by Joseph Arnault, a French engraver, at that time working in Montreal.

Numbers 18 to 70, both inclusive, are generally known as the “Patriotes’ Sous.”

Notwithstanding the loyalty displayed by the French Canadians in the war of 1812, it was the practise of the Governors, from Craig to Aylmer, to treat them as a subject race by excluding them from all public offices, which offices were monopolized by the English speaking citizens.

Thus there came to be a division of the French speaking citizens into two factions. The “Bureaucrates”, who sided with the government and the “Patriotes”, whose aim was to regain the liberties accorded them by the Treaty of Paris.

In 1837 at a large meeting of Patriots, known as “L’Assemblée des six Comtés,” held at St. Charles, resolutions were adopted by which the Members of the Association bound themselves not to buy any goods produced or manufactured in Great Britain; thus confining themselves to Canadian goods and produce.

Even British coins and currency were rejected and tokens conformable with their own monetary system were ordered to be coined mainly in the United States.

This is the reason why the famous sous came to be issued, and how their name originated.

The other sous were issued by financial institutions or by private firms.

These numerous varieties of the Bouquet-Sous, in many instances, differ only in minor points while in others they are simply the product of the crossing of dies. Several are very rare, if not unique.

A convenient way of classifying them is by the number of leaves in the wreath, grouping all with 40, 32 and lesser number of leaves under separate heads; then by noting the number of shamrocks in the bouquet and their relative position also whether the ends of the ribbon binding the bouquet extend to the right or left or in both directions and, if there be a bow, to give the direction in which it inclines.

I would strongly advise young collectors to acquire the habit of arranging their varieties by the descriptions rather than by the illustrations, otherwise they are likely to lose the power of arrangement from descriptions and much of the benefit and pleasure to be derived from collecting.

To facilitate this classification I have detailed only such leaves and flowers as are necessary for distinguishing the different varieties.

The plates will be most useful in helping collectors to quickly locate under their proper numbers any varieties that may come into their hands, as also to experts when cataloguing a collection for auction. Celerity in such cases being indeed a necessity.

The frequency with which the words "to right" and "to left" occur in the description has suggested their abbreviation by the letters r. and l. respectively. I also considered it more convenient to give the number of leaves

and flowers in figures rather than in words, although it is not considered good form.

I had considerable difficulty in finding out all the different varieties of these tokens and have described and illustrated only such as I have seen or have learned on undoubted authority to be in actual existence.

In describing the bouquets I do not pretend that the list is absolutely complete; the study of our tokens is too extensive for one to believe that new varieties may not come to light at some future day.

I cannot close without referring to Mr. R. W. McLachlan, of Montreal, who has helped me in many ways, and who has at all times generously placed his cabinet at my disposal.

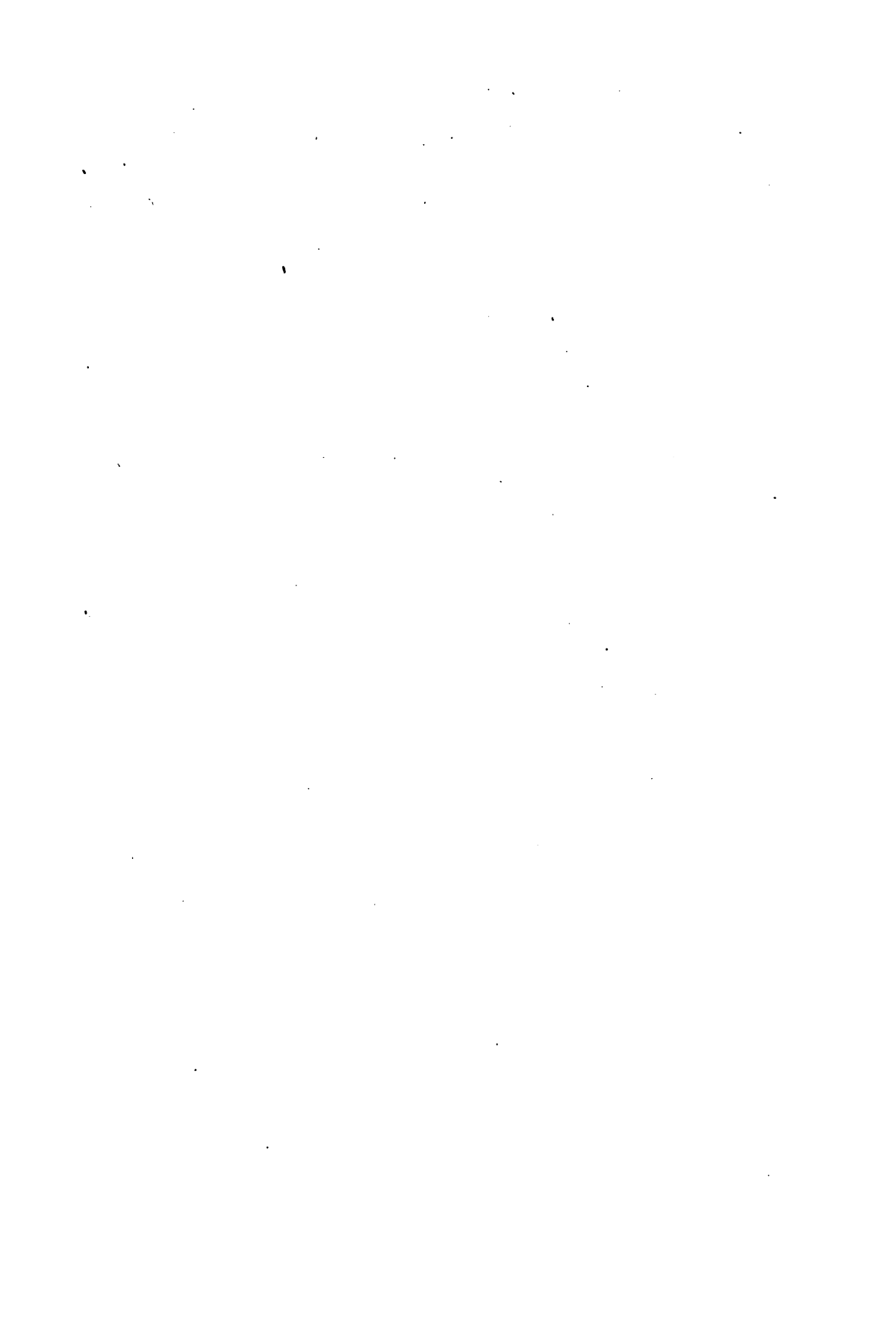
DR. COURTEAU,

St-Jacques, Que.,

11th April, 1908.

Canada.





# THE BOUQUET-SOUS

---

## No. 1.

*Obv.* Bouquet made up of 3 ears of wheat at the top, one thistle, one rose and a spray of small leaves on either side; the ribbon binding the stems without bow, TRADE & AGRICULTURE \* LOWER CANADA \*.

*Rev.*  $\frac{1}{2}$ /PENNY/TOKEN/1837 within a wreath; outside the wreath, above, PRO BONO PUBLICO, below MONTREAL. R. 10.

## No. 2.

*Obv.* Same as No. 1.

*Rev.*  $\frac{1}{2}$ /PENNY within a wreath, above BANK TOKEN, below, MONTREAL. R. 9.

## No. 3.

*Obv.* Similar to No. 1, but without stars or points dividing TRADE & AGRICULTURE and LOWER CANADA. The stem of lower rosebud on l. is heavy, almost straight and overlaps the upper shamrock, that of the upper bud is attached below the centre; the bud to r. has a long straight stem, the ribbon has bow to l. with one end on either side.

*Rev.* UN/SOUS within a wreath, above, BANK OF MONTREAL, below TOKEN. Laurel branch of 21 leaves, the central leaf of a group opposite NK in BANK has a short slender stem; the first palm leaf under the letter S is forked with the left much shorter than the right. R. 2.

### *Straight Stem Variety.*

The more salient points of difference in the "Un Sous" varieties described under numbers 3 to 13 are found in the stems of the rose buds and in the relative positions of the laurel leaves opposite BANK.

**No. 4.**

*Obv.* The stem of the lower l. rosebud is long and much curved; that of the upper bud is joined at the centre; the r. bud has a long, slender stem curved somewhat upwards; the ribbon and bow as in last.

*Rev.* The stem of centre leaf opposite NK is wanting and the palm branch lighter with the two parts of its inside leaf long and equal. R. 4.

*Curved Stem Variety.*

**No. 5.**

*Obv.* Stem of lower l. bud starts from upper shamrock and slightly bends near its junction with the bud; the upper one has no stem; that of r. bud is short and starts from a small leaf; bow to l. with ends of ribbon on either side.

*Rev.* Closely resembles No. 3, but stem of centre leaf opposite NK is long and heavy. R. 2.

It occurs in different sized flans.

*Bent Stem Variety.*

**No. 6.**

*Obv.* The stems of all the rosebuds are short and very slight while that of the r. thistle is wanting; the petals of the r. rose are single, whereas they are double on the preceding varieties, this rose has no stem; double bow to l. with two ribbons extending to either side.

*Rev.* Differing from the others, the laurel branch having 20 leaves and a small stem near the berry pointing to N in BANK, two of the laurel leaves opposite NK have no stems. The letters are heavier. R. 4.

*Double Bow Variety.*

**No. 7.**

*Obv.* All the rosebuds are without stems; single bow to l. with ribbon at either side.

*Rev.* The three leaves opposite NK have very light stems, two of which are connected with that of the berry and the third disconnected from the branch. R. 4.

*Stemless Variety.*

**No. 8.**

*Obv.* Same as No. 3.

*Rev.* Similar, BANK TOKEN above the wreath, MONTREAL below. R. 6.

*Bank Token Straight stem variety.*

**No. 9.**

*Obv.* Same as No. 5.

*Rev.* Same as No. 8. R. 2.

*Bent Stem Variety.*

**No. 10.**

*Obv.* Same as No. 6.

*Rev.* Same as No. 8. R. 3.

*Double Bow Variety.*

**No. 11.**

*Obv.* Stem of l. bud is broken, the r. thistle has a very slender stem while that of the next bud is wanting as well that of both roses; single bow to l. with ribbon on either side.

*Rev.* Same as No. 8. R. 5.

*Broken Stem Variety.*

**No. 12.**

*Obv.* The stem of the lower l. bud is short, very distinct and connected with a short line extending to the rose, those of the thistles, the rose, the bud and rose leaves to r. are also distinct.

*Rev.* Closely resembling No. 8, but the stem of laurel leaf near BA connects with that of the berry; straight ribbon pointing to R in MONTREAL. R. 4.

*Short Stem Variety.*

**No. 13.**

*Obv.* The stem of lower l. bud is very short and comes from a small leaf which is directly under the rose—the only instance. The letters are heavy and old style, the “&” is large.

*Rev.* Same as No. 8. R. 6.

*The Large & Variety.*

Most of these varieties are produced by retouched dies; Nos. 3, 4, 5, 7 and 13 having No. 7 as prototype while 6, 9, 10 and 11 have No. 6. The reverse of No. 6 is from an altogether different die.

These are generally styled the English bouquets on account of their having been made at Birmingham, and further from the error in spelling the word "Sous".

**No. 14.**

*Obv.* Similar. Large rose to l. and large maple leaf to r.

*Rev.* UN/SOU within a wreath of 5 large maple leaves. BANQUE DU PEUPLE, MONTREAL. Edge milled. R. 2.

This sou is met with on flans of different sizes and thicknesses.

This is the so called Rebellion token. A name applied to it from the fact that it bears on the reverse emblems of liberty: A star to the left and a Phrygian cap to the right. These symbols were introduced, it is believed, by an employee of the Bank who was a member of a society styled "Les Fils de la Liberté."

The aim of this Association was to secure the restoration of the equality of the two races, which the maladministration of some of the governors had disturbed.

**No. 15.**

*Obv.* Similar. One rose and a sprig of three small shamrocks to l.; 2 thistles to r., bow to l. with ribbon to r.

*Rev.* UN SOU within a wreath of 25 maple leaves. BANQUE DU PEUPLE, MONTREAL. Edge milled. R. 1.

**No. 16**

Same as No. 15. Edge plain. R. 6.

**No. 17.**

Same as No. 15. Brass. R. 6.

**No. 18.**

*Obv.* Similar. Bouquet has one thistle to l. and 6 shamrocks; a sprig of 2 small and a large one above l. end of ribbon, a similar sprig at the top with the largest leaf directly under the "&"; ribbon at either side. There is a small cross "+ " before AGRICULTURE and after COMMERCE.

*Rev.* UN SOV not well centred within a wreath of 40 very distinct laurel leaves; above TOKEN, below MONTREAL. R. 4.

40 leaves.

**No. 19.**

*Obv.* Bouquet has 3 shamrocks; 2 above l. ribbon and one in the centre; ribbon at either side. Broken die.

*Rev.* Same as No. 18. R. 4.

40 leaves.

**No. 20.**

*Obv.* Same as No. 19, but the crack in the die is more distinct.

*Rev.* Wreath of 32 leaves with large bow; the u in UN double cut. R. 4.

32 leaves.

**No. 21.**

*Obv.* Same as No. 12, but the die has been slightly retouched.

*Rev.* Same as No. 20. R. 5.

32 leaves.

**No. 22.**

*Obv.* Bouquet has 2 shamrocks, one under the thistle leaf to l. and one at the top between ears of wheat; ribbon at either side.

*Rev.* Same as No. 20. R. 3.

32 leaves.

All the specimens of this sou that have come under my observations show clearly on the obverse traces of the reverse, incused

### No. 23.

*Obv.* Bouquet has 2 thistles to l. and one shamrock to r. between the ear of wheat and rose; ribbon at either side. R. 6.

*Rev.* Same as No. 20. R. 6.

32 leaves.

This sou is seldom met with in fine condition.

### No. 24.

*Obv.* Similar, but the design differs entirely from the others; the bouquet having no shamrocks while the ribbon tying the stems has neither bow nor extending ends.

*Rev.* The wreath has 21 leaves—10 to l. and 11 to r. and is without a bow. R. 6.

21 leaves.

The dies of this sou were found in the cellar of a building on Notre Dame street, Montreal, occupied by Dr. Picault, a Druggist, who gave them to the Numismatic and Antiquarian Society of Montreal. Specimens were struck by the Society on several occasions and in different metals.

It is doubtful if any originals of this sou are in existence, although Dr. Leroux claims to have discovered one in a collection of coppers which he bought in Ottawa, but it is most likely an early restrike. These early restrikes which were struck before the dies were turned down to receive a collar can be easily distinguished from those struck afterwards.

### No. 25.

*Obv.* The bouquet has 2 shamrocks, one under the ear of wheat to l. and one above close to the rose to r., the ribbon extends on either side.

*Rev.* Wreath of 20 cherry leaves with a large flat topped bow. R. 4.

20 leaves.

### No. 26.

*Obv.* and *Rev.* same as No. 25, but with no blade of wheat between the thistles. R. 5.

*The so called Hart Variety.*

**No. 27.**

*Obv.* Bouquet has one maple leaf to l. and 2 shamrocks to r. above the ends of ribbon; bow to l. with ribbons to r.

*Rev.* Wreath close at the top with small flat bow.

It occurs with perfect and broken dies and on thick and thin flans. R. 2.

20 leaves.

**No. 28.**

Same as No. 27. Brass. Specimens that are occasionally met with in pale copper should not be mistaken for those in true brass, which are much scarcer. R. 6.

**No. 29.**

*Obv.* Bouquet has one shamrock to l. between thistle and ear of wheat; ribbon on either side. It occurs with perfect and broken dies.

*Rev.* Wreath of 18 leaves with 3 berries on the inside and 8 on the outside; the bow is high, close to the leaves and without the berries on either side. Thick and thin flans R. 3.

18 leaves.

**No. 30.**

*Obv.* The bouquet has 3 ears of wheat at the top and 3 shamrocks, 2 between the lower thistle and the ear of wheat to l. and one above and touching the rose to r., ribbon on either side.

*Rev.* Same as No. 29. R. 8.

18 leaves.

**No. 31.**

*Obv.* The bouquet has 3 maple leaves and 2 shamrocks, between rose leaves and the bow.; bow to r. with ribbons to l.

*Rev.* Same as No. 29. Thick and thin flans, the former of which, rarely met with, is from a broken obverse die. R. 5.

18 leaves.



**No. 32.**

*Obv.* The bouquet has 2 shamrocks, one of which is below the lower thistle on l. and one under rose leaves on r., bow to r. with ribbons to l.

*Rev.* Same as No. 29. R. 4.

18 leaves.

**No. 33.**

*Obv.* The bouquet has 2 shamrocks to l., one under maple leaf and one between the thistle and ear of wheat; ribbon on either sides.

*Rev.* The wreath has 2 berries on the inside and 9 on the outside; the bow is small, angular and is without the berries at the side.

Most specimens occur with both obverse and reverse dies broken. They are also found struck on thick and thin flans, the former being much the scarcer. R. 4.

18 leaves.

**No. 34.**

Same as No. 33. Brass. R. 6.

**No. 35.**

*Obv.* Same as No. 15.

*Rev.* Same as No. 29. R. 4.

18 leaves.

**No. 36.**

*Obv.* Same as No. 15.

*Rev.* Same as No. 33. Broken die; thick and thin flans. R. 6.

18 leaves.

**No. 37.**

*Obv.* The bouquet has 3 wheat blades at the top and 5 shamrocks, 2 to l. and 3 to r. below the rose; bow to r. and ribbons to l. a colon ( : ) instead of a cross occurs before AGRICULTURE and after COMMERCE.

*Rev.* The wreath has a small, flat bow with a berry on either side. R. 4.

18 leaves.

**No. 38.**

*Obv.* Closely resembles the last, but the bouquet has only 2 wheat blades at the top; the 3 shamrocks to r. are differently arranged, the highest being under the ear of wheat.

*Rev.* Same as No. 37. R. 2.

18 leaves.

**No. 39.**

*Obv.* The bouquet has 7 shamrocks; 3 to l. and 4 to r., one of the latter being directly under the rose; the bow to l. and the ribbon to r. A dot instead of a dash occurs between BAS and CANADA.

*Rev.* Same as No. 37. I possess a specimen struck on a wider and thinner flan. R. 1.

18 leaves.

**No. 40.**

*Obv.* A close copy of No. 39, but the bouquet has only 2 wheat blades at the top while the shamrocks are differently designed, appearing like 3 small circles joined together. There is neither dot nor hyphen between BAS and CANADA.

*Rev.* The wreath has no bow and its leaves are more open. R. 7.

18 leaves.

This sou is evidently an imitation of the last, but was struck at a much later period. All known specimens are on copper of a light shade.

**No. 41.**

*Obv.* Same as No. 37.

*Rev.* The wreath has 8 berries on the inside and 7 on the outside, and has no bow. It generally occurs with broken die. Specimens on thin flans are scarce. R. 4.

18 leaves.

**No. 42.**

*Obv.* Same as No. 39, but the die has been retouched.

*Rev.* Same as No. 41. R. 4.

18 leaves.

**No. 43.**

*Obv.* The bouquet has no shamrock, but has one maple leaf to l. and 3 rose leaves to r. between rose and ribbon, bow to r. with ribbon on either side—the only case in which this occurs.

*Rev.* Resembles No. 37, but the r. angle of bow is higher; a berry is directly over E in MONTREAL. Broken die; on thick and thin flans. R. 1.

18 leaves.

**No. 44.**

Same as No. 43. Brass, R. 6.

**No. 45.**

*Obv.* Bouquet with 2 shamrocks to l., one above the maple leaf and one between thistle and ear of wheat; bow to r. with ribbon to l. A dot before AGRICULTURE and after COMMERCE.

*Rev.* The wreath has 7 berries on the inside and 10 on the outside; the bow is small, distant from the leaves and is without a berry on either side. R. 6.

18 leaves.

Few specimens of this variety show traces of the brake that regularly occurs in this when combined with other reverses. I have in my collection a specimen struck on a thin flan on which the break in the die is distinctly shown.

**No. 46.**

*Obv.* Same as No. 45. I have never seen a specimen of this variety struck from a perfect die.

*Rev.* Same as No. 37. R. 4.

18 leaves.

**No. 47.**

*Obv.* The bouquet has 3 shamrocks to r., one above the rose and 2 above the ribbon; ribbon on either side. Broken die.

*Rev.* Open letters in UN/SOU. The wreath has no bow; a berry over the centre of N in MONTREAL. R. 3.

18 leaves.

**No. 48.**

*Obv.* Same as No. 47, but always from the die in perfect condition.

*Rev.* Closely resembles No. 47, but the wreath is more open at the top; a berry over space between o and n in MONTREAL. R. 5.

18 leaves.

**No. 49.**

*Obv.* The bouquet has 6 shamrocks; 2 to l. and 4 to r. — one at either side above bow and ribbons; bow to r. with ribbons to l. A small cross (+) before AGRICULTURE and after COMMERCE.

*Rev.* Wreath of 17 leaves; bow angular, of medium size and without the berries at the sides. R. 4.

17 leaves.

**No. 50.**

Same as No. 49. Brass. R. 6.

**No. 51.**

*Obv.* Same as No. 45, but from broken dies.

*Rev.* Close letters in UN/SOU; wreath of 17 leaves without a bow. R. 4.

17 leaves.

**R. 52.**

Same as No. 51. Brass. R. 6.

**No. 53.**

*Obv.* Same as No. 45, but from the die after it had been broken.

*Rev.* Wreath of 16 leaves; large, angular bow with one berry on the r. R. 4.

16 leaves.

**No. 54.**

*Obv.* Same as No. 39.

*Rev.* Same as No. 53. Thick and thin flans, the latter the scarcer of the two. R. 2.

16 leaves.

**No. 55.**

Same as No. 54. Brass. R. 6.

**No. 56.**

*Obv.* The bouquet has 4 shamrocks, one between thistle and ear of wheat to l., one above the rose and 2 above the ribbon to r.; bow to l. with ribbon to r.

*Rev.* Same as No. 53. R. 4.

16 leaves.

**No. 57.**

*Obv.* The bouquet has 3 shamrocks, one between the thistle and ear of wheat to l. one above the rose and one above the ribbon to r.; bow to l. with ribbon to r.

*Rev.* The angles of bow are not so acute, a berry on either side; one of the berries in wreath is under the r. leg of N in TOKEN. Thick and thin flans. R. 6.

16 leaves.

**No. 58.**

*Obv.* Same as No. 56.

*Rev.* Same as No. 57. R. 7.

16 leaves.

**No. 59.**

*Obv.* Same as No. 57.

*Rev.* The bow is heavy and tall with a berry to l. and one under T in TOKEN. Broken die. R. 5.

16 leaves.

**No. 60.**

*Obv.* Same as No. 47, but from perfect dies.

*Rev.* Same as No. 59. R. 7.

16 leaves.

**No. 61.**

*Obv.* The bouquet has 4 shamrocks, one between the thistle leaf and lower thistle to l., one below rose and 2 above the ribbons; bow to l. with small ribbons to r.

*Rev.* Same as No. 57. R. 8.

16 leaves.

**No. 62.**

*Obv.* Same as No. 61.

*Rev.* Same as No. 53. R. 10.

16 leaves.

Mr. Thomas Wilson, who claims it to be unique has this combination in his collection. It is described by Dr. Leroux in his Coin Cabinet under No. 548a.

**No. 63.**

*Obv.* The bouquet has 5 shamrocks, 3 between the bow and lower thistle, one between the thistle to l. and one above ribbon to r.; bow to l. with ribbon to r. A dot between BAS and CANADA.

*Rev.* A small wreath showing a large, flat bow with a berry on either side. The edge has wide milling. R. 6.

16 leaves.

**No. 64.**

Same as No. 63, but with close milling. R. 3.

**No. 65.**

Same as No. 63. Plain edge. R. 3.

**No. 66.**

Same as No. 63, but struck on thin flan. R. 5.

**No. 67.**

*Obv.* and *Rev.* Same as No. 63. Brass. R. 5.

**No. 68.**

*Obv.* and *Rev.* Same as No. 64. Brass. R. 6.

**No. 69.**

*Obv.* and *Rev.* Same as No. 65. Brass. R. 6.

**No. 70.**

*Obv. and Rev.* Same as No. 66. Brass. R. 5.

As this sou is found struck in different metals, on flans of well marked differences in thickness and with different edges, some of which varieties are much rarer than others, I have thought it well to give each variety a separate number.

**No. 71.**

*Obv.* Same as No. 47.

*Rev.* Eagle and anchor surrounded by stars. T. DU-SEAMAN BUTCHER—BELLEVILLE. Both dies broken. R. 4.

**No. 72.**

*Obv.* Two large maple leaves crossed. COMMERCE  
BAS-CANADA.

*Rev.* UN/SOU within a wreath, above J<sup>H</sup>. ROY, below MONTREAL. Thick flan. R. 5.

**No. 73.**

*Obv. and Rev.* same as No. 72. Thin flan. R. 4.

SYNOPTICAL TABLE  
OF THE  
PATRIOTES' SOUS

40 leaves	6 shamrocks	18
	3 "	19
32 leaves	4 "	21
	3 "	20
	2 "	22
	1 "	23
21 leaves	Without . . .	24
20 leaves	2 shamrocks	25, 26, 27, 28
18 leaves	7 "	39, 40, 42
	5 "	37, 38, 41
	3 "	30, 35, 36, 47, 48
	2 "	31, 32, 33, 34, 45, 46
	1 "	29
	Without . . .	43, 44
17 leaves	6 shamrocks	49, 50
	2 "	51, 52
16 leaves	7 "	54, 55
	5 "	63, 64, 65, 66, 67, 68, 69, 70
	4 "	56, 58, 61, 62
	3 "	57, 59, 60
	2 "	53



